

# CF 500-230V - 电动压线工具



1208348

<https://www.phoenixcontact.com/cn/products/1208348>

请注意，本PDF文档中所示数据均生成自在线目录。完整数据请见用户文档。我们的一般下载使用条款已生效。

通用电动压接器，固定钳口，可用于各种连接元件



## 优势

- 绝缘电缆端头最大6 mm<sup>2</sup>
- 冷压头最大50 mm<sup>2</sup>
- 车削插针最大10 mm<sup>2</sup>
- 管状插针最大10 mm<sup>2</sup>
- TWIN冷压头最大2 x 10 mm<sup>2</sup>
- 非绝缘电缆接线环最大16 mm<sup>2</sup>

## 商业数据

|             |                  |
|-------------|------------------|
| 订货号         | 1208348          |
| 包装单位        | 1 pc             |
| 最小订货量       | 1 pc             |
| 销售关键代码      | BH3231           |
| 产品关键代码      | BH3231           |
| 目录页面        | 页码438 (C-3-2019) |
| GTIN        | 4046356014472    |
| 单件重量 (含包装)  | 13,850 g         |
| 单件重量 (不含包装) | 14,529 g         |
| 关税号         | 8479899990       |
| 原产地         | DE               |

# CF 500-230V - 电动压线工具



1208348

<https://www.phoenixcontact.com/cn/products/1208348>

## 技术数据

### 产品属性

|        |       |
|--------|-------|
| 产品类型   | 压线工具  |
| 压缩     | 通用    |
| 最小插入长度 | 10 mm |

### 电气特性

|      |       |
|------|-------|
| 频率范围 | 50 Hz |
| 功耗   | 160 W |

### 电源

|        |               |
|--------|---------------|
| 电源电压范围 | 230 V (50 Hz) |
|--------|---------------|

### 连接数据

#### 导线连接

|           |   |
|-----------|---|
| 横截面范围, 公制 | 0.25 mm <sup>2</sup> ... 50 mm <sup>2</sup> |
| 横截面范围AWG  | 24 ... 1/0                                  |

### 尺寸

|    |        |
|----|--------|
| 宽度 | 140 mm |
| 高度 | 320 mm |
| 长度 | 220 mm |

### 材料规格

|    |    |
|----|----|
| 颜色 | 灰色 |
|----|----|

# CF 500-230V - 电动压线工具



1208348

<https://www.phoenixcontact.com/cn/products/1208348>

## 认证

🔗 To download certificates, visit the product detail page: <https://www.phoenixcontact.com/cn/products/1208348>



**EAC**

认证ID: RU C-DE.AI30.B.01549

# CF 500-230V - 电动压线工具



1208348

<https://www.phoenixcontact.com/cn/products/1208348>

## 分类

### ECLASS

|             |          |
|-------------|----------|
| ECLASS-11.0 | 17130101 |
| ECLASS-12.0 | 17130101 |
| ECLASS-13.0 | 17130101 |

### ETIM

|          |          |
|----------|----------|
| ETIM 9.0 | EC002778 |
|----------|----------|

### UNSPSC

|             |          |
|-------------|----------|
| UNSPSC 21.0 | 27111500 |
|-------------|----------|

# CF 500-230V - 电动压线工具

1208348

<https://www.phoenixcontact.com/cn/products/1208348>



## 产品环境合规性

|            |                         |
|------------|-------------------------|
| REACH SVHC | Lead 7439-92-1          |
| China RoHS | 环保使用期限 = 25 ;           |
|            | 有关危险物质的信息，请见“下载”下的制造商声明 |

# CF 500-230V - 电动压线工具

1208348

<https://www.phoenixcontact.com/cn/products/1208348>

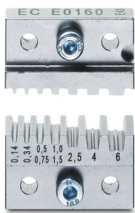


## 附件

### CF 500/DIE AI 6 - 压接插芯

1212238

<https://www.phoenixcontact.com/cn/products/1212238>

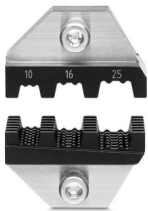


用于压接的机械CF 500 , 用于套管(A...和Al...) 0.08 ... 6 mm<sup>2</sup>

### CF 500/DIE AI 25 - 压接插芯

1212239

<https://www.phoenixcontact.com/cn/products/1212239>



用于压接的机械 CF 500, 用于套管 (A... and Al...) 10.16 and 25 mm<sup>2</sup>

# CF 500-230V - 电动压线工具

1208348

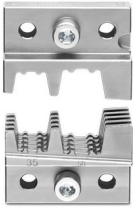
<https://www.phoenixcontact.com/cn/products/1208348>



## CF 500/DIE AI 50 - 压接插芯

1212261

<https://www.phoenixcontact.com/cn/products/1212261>



用于压接的机械 CF 500, 用于套管 (A... and Al...) 35 and 50 mm<sup>2</sup>

---

## CF 500/DIE AI-TWIN 10 - 压接插芯

1212262

<https://www.phoenixcontact.com/cn/products/1212262>



用于压接的机械 CF 500, 用于 TWIN 套管 (AI-TWIN...) 2 x 4, 2 x 6 and 2 x 10 mm<sup>2</sup>

# CF 500-230V - 电动压线工具

1208348

<https://www.phoenixcontact.com/cn/products/1208348>



## CF 500/DIE RCI 1,5 - 压接插芯

1212263

<https://www.phoenixcontact.com/cn/products/1212263>



用于压接的机械 CF 500, 适用预绝缘电缆端头 (C-RCI... and C-FCI...) 0.14 ... 1.5 mm<sup>2</sup>

## CF 500/DIE RCI 6 - 压接插芯

1212240

<https://www.phoenixcontact.com/cn/products/1212240>



用于压接的机械 CF 500, 适用预绝缘电缆端头 (C ... RCI... and C ... FCI...) 0.5 ... 6 mm<sup>2</sup>



# CF 500-230V - 电动压线工具

1208348

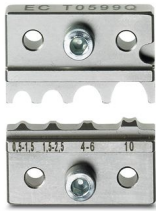
<https://www.phoenixcontact.com/cn/products/1208348>



## CF 500/DIE RC 10 - 压接插芯

1212244

<https://www.phoenixcontact.com/cn/products/1212244>



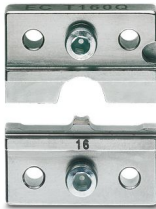
用于压接的机械 CF 500, 用于电缆插针 (C-RC... and C-FC...) 0.5 ... 10 mm<sup>2</sup>

---

## CF 500/DIE RC 16 - 压接插芯

1212257

<https://www.phoenixcontact.com/cn/products/1212257>



用于压接的机械 CF 500, 用于绝缘电缆插针 (C-RC... and C-FC...) 16 mm<sup>2</sup>

# CF 500-230V - 电动压线工具

1208348

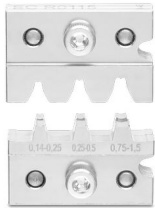
<https://www.phoenixcontact.com/cn/products/1208348>



## CF 500/DIE SC 1,5 - 压接插芯

1212241

<https://www.phoenixcontact.com/cn/products/1212241>

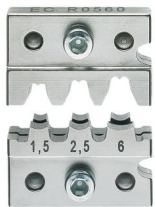


用于压接的机械 CF 500, 适用滑插式套管和扁平连接器 (C-SCF... and C-SCM...)  
0.1 ... 1.5 mm<sup>2</sup>

## CF 500/DIE SC 6 - 压接插芯

1212242

<https://www.phoenixcontact.com/cn/products/1212242>



用于压接的机械 CF 500, 适用滑插式套管和扁平连接器 适用滑插式套管和扁平连接器 (C-SCF... and C-SCM...) 0.5 ... 6 mm<sup>2</sup>

# CF 500-230V - 电动压线工具

1208348

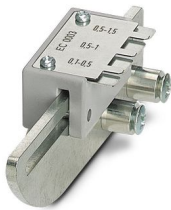
<https://www.phoenixcontact.com/cn/products/1208348>



## CF 500/LOC SCF 2,8/1,5 - 压接定位器

1212249

<https://www.phoenixcontact.com/cn/products/1212249>

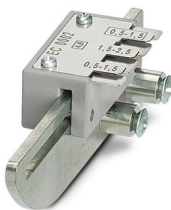


用于CF 500压线机的套筒接收器, 适用滑插式套管 (SCF 2.8...), 0.1-1.5 mm<sup>2</sup>, 厚度 : 2.8 mm , 长度 5 mm

## CF 500/LOC SCF 4,8/2,5 - 压接定位器

1212248

<https://www.phoenixcontact.com/cn/products/1212248>



用于CF 500压线机的套筒接收器, 适用滑插式套管 (SCF 4,8...), 0.5-2.5 mm<sup>2</sup>, 厚度 : 4.8 mm

# CF 500-230V - 电动压线工具

1208348

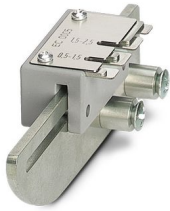
<https://www.phoenixcontact.com/cn/products/1208348>



## CF 500/LOC SCM 6,3/2,5 - 压接定位器

1212264

<https://www.phoenixcontact.com/cn/products/1212264>

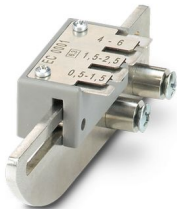


用于CF 500压线机的套筒接收器，用于扁平插头 (SCM...) 0.5 - 2.5 mm，厚度：6.3 mm

## CF 500/LOC SCF 6,3/6 - 压接定位器

1212247

<https://www.phoenixcontact.com/cn/products/1212247>



用于CF 500压线机的套筒接收器，适用滑插式套管 (SCF 6,3...), 0.5-6 mm<sup>2</sup>，厚度：6.3 mm

# CF 500-230V - 电动压线工具

1208348

<https://www.phoenixcontact.com/cn/products/1208348>



## CF 500/COV AI 6 - 盖板

1212254

<https://www.phoenixcontact.com/cn/products/1212254>

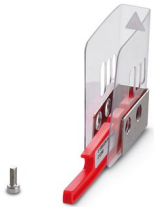


压接器 CF 500 保护盖，用于套管  $0.25 - 6 \text{ mm}^2$  (AI 6...)

## CF 500/COV AI TWIN - 盖板

1212266

<https://www.phoenixcontact.com/cn/products/1212266>



压接器 CF 500 保护盖，用于 TWIN 套管  $2 \times 4 - 2 \times 10 \text{ mm}^2$  (AI-TWIN...)

# CF 500-230V - 电动压线工具

1208348

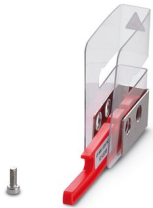
<https://www.phoenixcontact.com/cn/products/1208348>



## CF 500/COV RCI - 盖板

1212255

<https://www.phoenixcontact.com/cn/products/1212255>

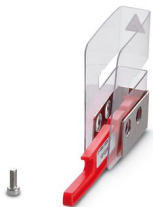


压接机 CF 500 保护盖，适用于绝缘电缆端头  $0.14 - 6 \text{ mm}^2$  (RCI 1.5/6) 和车削插针  $0.14 - 4 \text{ mm}^2$  (TC 4)

## CF 500/COV RC 10 - 盖板

1212252

<https://www.phoenixcontact.com/cn/products/1212252>



压接器 CF 500 保护盖，用于绝缘电缆插针  $0.5 - 10 \text{ mm}^2$  (RC 10) and tubing lugs  $4 - 10 \text{ mm}^2$  (RCT 10-...)

# CF 500-230V - 电动压线工具

1208348

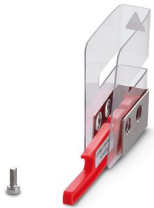
<https://www.phoenixcontact.com/cn/products/1208348>



## CF 500/COV RCT 4 - 盖板

1212253

<https://www.phoenixcontact.com/cn/products/1212253>

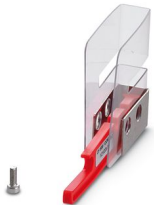


压接器 CF 500 保护盖，用于管子接线头 0.34 - 2.5 mm<sup>2</sup> (RCT 2.5)

## CF 500/COV SC - 盖板

1212251

<https://www.phoenixcontact.com/cn/products/1212251>



压接器 CF 500 保护盖，用于扁平插头端连接器和扁平电缆连接器 0.1-6 mm<sup>2</sup>, SC 1.5... and SC 6...

# CF 500-230V - 电动压线工具

1208348

<https://www.phoenixcontact.com/cn/products/1208348>



## CF 500/COV - 盖板

1212250

<https://www.phoenixcontact.com/cn/products/1212250>



用于套管的CF 500压接设备保护罩：10 ... 25 mm<sup>2</sup> (AI 25, AI 50)，TWIN套管：6 ... 16 mm<sup>2</sup> (AI-TWIN 16)，未绝缘电缆接线环：16 mm<sup>2</sup> (RC 16)，转动触点：6 ... 10 mm<sup>2</sup> (TC HC 10)

## CF 500/DIE FBS - 压接插芯

1212461

<https://www.phoenixcontact.com/cn/products/1212461>



CF 500钳口，用于插入式桥接件 (FBS... 4,5,6 和 8)，适用于独立跳接条的简易回复



# CF 500-230V - 电动压线工具

1208348

<https://www.phoenixcontact.com/cn/products/1208348>



## CF 500/COV FBS - 盖板

1212462

<https://www.phoenixcontact.com/cn/products/1212462>

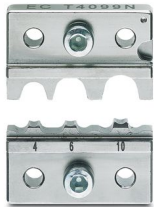
CF 500保护盖，适用FBS...插入式桥接件



## CF 500/DIE RCT 10-1 - 压接插芯

1212245

<https://www.phoenixcontact.com/cn/products/1212245>



用于压接的机械 CF 500，用于管子接头 4 ... 10 mm<sup>2</sup>, 4 mm<sup>2</sup>: Outer Ø 5 mm, Inner Ø 3 mm, 6 mm<sup>2</sup>: Outer Ø 6.5 mm, Inner Ø 3.5 mm, 10 mm<sup>2</sup>: Outer Ø 7 mm, Inner Ø 4.5 mm

# CF 500-230V - 电动压线工具

1208348

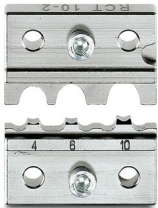
<https://www.phoenixcontact.com/cn/products/1208348>



## CF 500/DIE RCT 10-2 - 压接插芯

1212246

<https://www.phoenixcontact.com/cn/products/1212246>

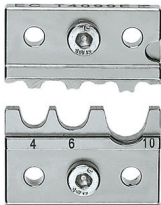


用于压接的机械 CF 500 , 用于管子接头头 4 ... 10 mm<sup>2</sup>, **4 mm<sup>2</sup>**: Outer Ø 5 mm, Inner Ø 3 mm, **6 mm<sup>2</sup>**: Outer Ø 6.5 mm, Inner Ø 3.8 mm, **10 mm<sup>2</sup>**: Outer Ø 6 mm, Inner Ø 4.5 mm

## CF 500/DIE RCT 10-3 - 压接插芯

1212256

<https://www.phoenixcontact.com/cn/products/1212256>



用于压接的机械 CF 500 , 用于管子接头头 4 ... 10 mm<sup>2</sup>, **4 mm<sup>2</sup>**: Outer Ø 5 mm, Inner Ø 3 mm, **6 mm<sup>2</sup>**: Outer Ø 6 mm, Inner Ø 4 mm, **10 mm<sup>2</sup>**: Outer Ø 8 mm, Inner Ø 5 mm

# CF 500-230V - 电动压线工具

1208348

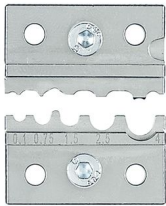
<https://www.phoenixcontact.com/cn/products/1208348>



## CF 500/DIE RCT 4 - 压接插芯

1212243

<https://www.phoenixcontact.com/cn/products/1212243>

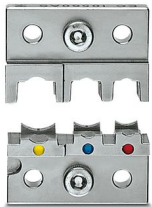


用于CF 500压接设备的钳口，适用于0.1 ... 4 mm<sup>2</sup>管接头

## CF 500/DIE RCI 6-1 - 压接插芯

1212691

<https://www.phoenixcontact.com/cn/products/1212691>



用于压接的机械 CF 500, 适用预绝缘电缆端头 (C ... RCI... and C ... FCI...) 0.5 ... 6 mm<sup>2</sup>

# CF 500-230V - 电动压线工具

1208348

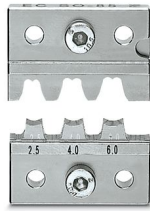
<https://www.phoenixcontact.com/cn/products/1208348>



## CF 500/DIE SR 6-2 - 压接插芯

1212692

<https://www.phoenixcontact.com/cn/products/1212692>

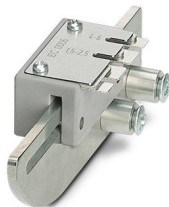


用于CF 500压接设备的钳口，适用于光伏触点，2.5 mm<sup>2</sup>、4 mm<sup>2</sup>、6 mm<sup>2</sup>

## CF 500/LOC SCM 6,3/6 - 压接定位器

1212265

<https://www.phoenixcontact.com/cn/products/1212265>



用于CF 500压线机的套筒接收器，用于扁平插头 (SCM...) 1.5 - 6 mm，厚度：6.3 mm

# CF 500-230V - 电动压线工具



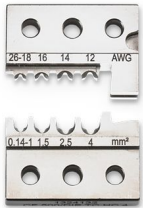
1208348

<https://www.phoenixcontact.com/cn/products/1208348>

## CF 500/DIE TC HC 4 - 压接插芯

1324132

<https://www.phoenixcontact.com/cn/products/1324132>

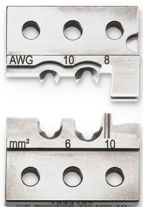


适用于CF 500压接设备的钳口，CK 1,6-ED...、CK 2,5-ED...、CK 4,0-ED...车削插针，4个标识的钳口位

## CF 500/DIE TC HC 10 - 压接插芯

1324137

<https://www.phoenixcontact.com/cn/products/1324137>



适用于CF 500压接设备的钳口，CK 4,0-ED...车削插针，2个标识的钳口位

Phoenix Contact 2024 Â© - 保留所有权利

<https://www.phoenixcontact.com>

菲尼克斯（中国）投资有限公司总部  
南京市江宁经济开发区菲尼克斯路36号  
（江宁236信箱）邮编：211100  
025-52121888  
[phoenix@phoenixcontact.com.cn](mailto:phoenix@phoenixcontact.com.cn)