

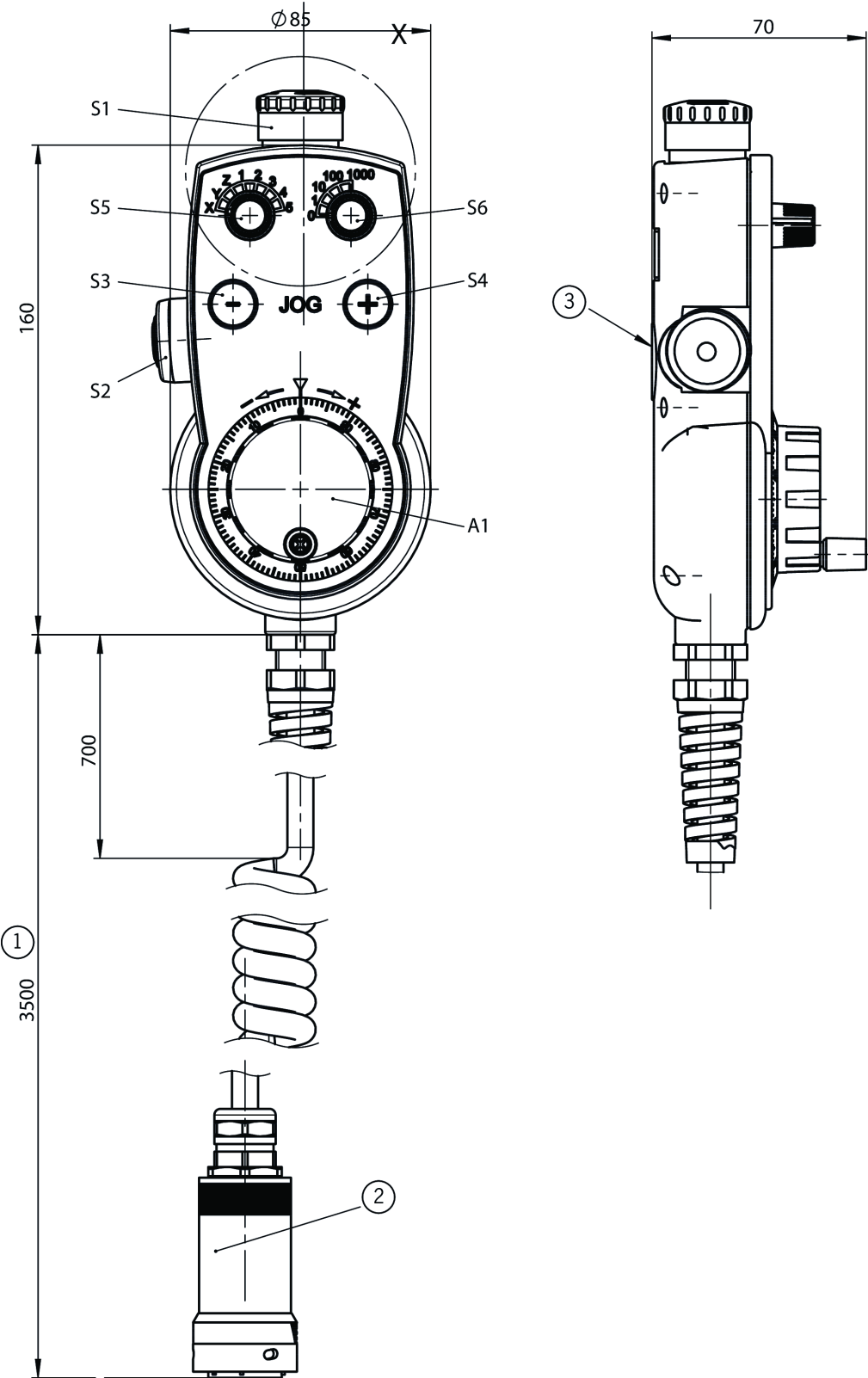
HBA-091638 (Order no. 091638)

Hand-held pendant station HBA, EMERGENCY STOP device, enabling switch, membrane pushbuttons, handwheel, selector switch

- ▶ Handwheel, 100 pulses, mechanical detent mechanism
- ▶ 1 enabling switch, 3-stage, 2 NO contacts each
- ▶ Tamper-proof EMERGENCY STOP device according to EN ISO 13850, dual-channel
- ▶ 1 selector switch with 8 positions (X, Y, Z, 1, 2, 3, 4, 5)
- ▶ 1 selector switch with 5 positions (0, 1, 10, 100, 1000)
- ▶ 2 membrane pushbuttons, 1 NO contact each



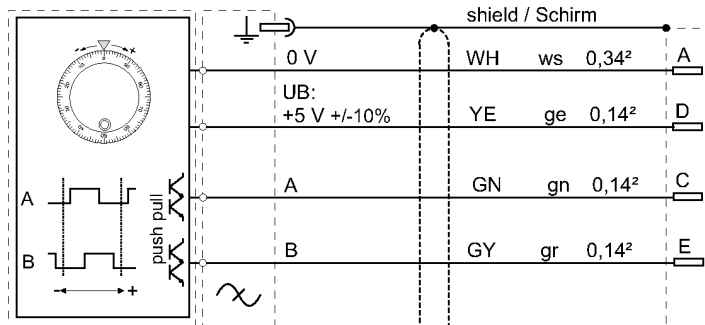
Dimensional drawings



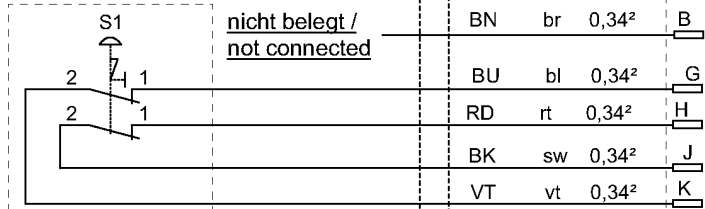
- 1 Cable length stretched
- 2 Plug connector 23-pin made of metal
- 3 Mounting magnet

Connection examples

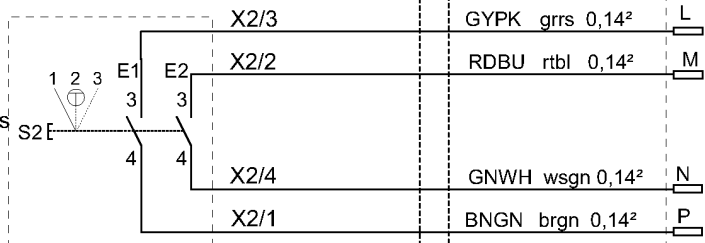
A1:
Handrad 100 Impulse
handwheel 100 pulses
Ausgang: 5V
output: 5V
G05



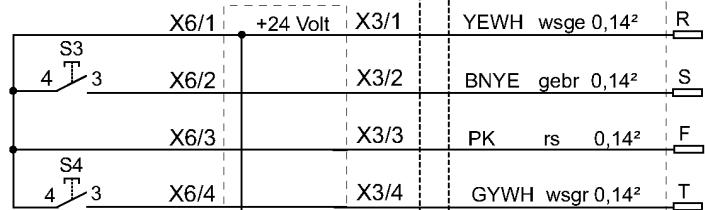
S1:
NOT-AUS
emergency-stop



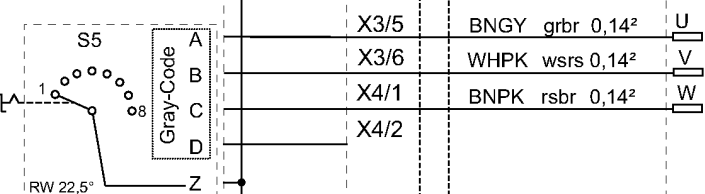
S2:
ZSX
Zustimmungsschalter links
enabling switch left



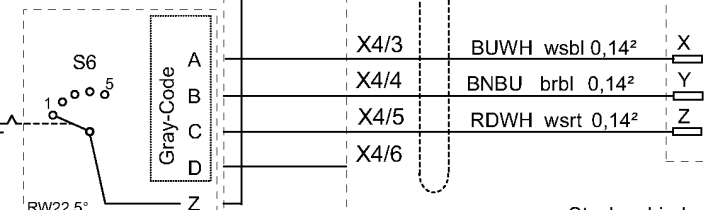
S3: -
Taste links
push button left



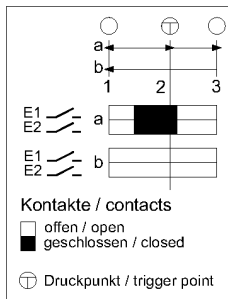
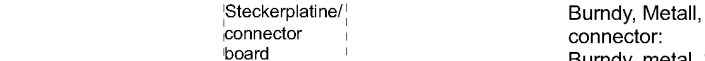
S4: +
Taste rechts
push button right



S5:
Stufenschalter links
selector switch left
8-stellig
8 positions



S6:
Stufenschalter rechts
selector switch right
5-stellig
5 positions



S5	CBA	
1	000	X
2	001	Y
3	011	Z
4	010	1
5	110	2
6	111	3
7	101	4
8	100	5

S6	CBA	
1	000	0
2	001	1
3	011	10
4	010	100
5	110	1000

Steckerplatine/
connector
board

Steckverbinder:
Burdny, Metall, 23 polig
connector:
Burdny, metal, 23 pin

Technical data

Approvals



Operating and display elements

Item	Extras	Color	Designation1	Number	LED	Note slide-in label	Version	Switching element	Slide-in label
see data sheets	–	black plastic adjusting wheel		1			Handwheel	–	
see data sheets	–	black knob with marking		1			Selector switch	8-stage, Gray coded, detent angle 22.5°	
see data sheets	labeled	–		2			Membrane key	1 NO contact each	
see data sheets	–	black		1			Enabling switch, 3-stage	2 NO contacts	
see data sheets	–	red-yellow		1			Emergency stop	2 pos. driven contacts	
see data sheets	–	black knob with marking		1			Selector switch	5-stage, Gray coded, detent angle 22.5°	

Electrical connection values

Connecting cable 6x0.34 mm² + 17x0.14 mm²
(screened)

EMC protection requirements

according to CE EN 61000-6-2, EN 61000-6-4

Display/control element

Output type

Handwheel G05

Operating voltage DC

Handwheel 5 V DC -5% ... +5%

Utilization category

DC-13 Emergency stop 30 V DC / 1 A

Pulses per revolution

Handwheel 2x100

Switching capacity (VA)

Membrane keypad max. 1 VA
(common connection)

Selector switch max. 0.2 VA

Enabling switch max. 0.25 VA

Switching voltage

Enabling switch max. AC/DC 42 V

Membrane keypad max. AC 25 V

Selector switch max. 15 V

Membrane keypad max. DC 42 V

Switching current

Enabling switch max. 100 mA

Selector switch max. 20 mA

Membrane keypad max. 100 mA
(common connection)

Mechanical values and environment

Connection type

Plug connector
(23-pin, metal version)

Cable length

coiled 3.5 m
(extended)

Atmospheric humidity

(condensation not permissible) max. 80 % rH

Shock and vibration resistance according to EN 60068-2-27/-2-6

Degree of protection

according to Nema 250-12
(on the front)
IP65
(on the front)

Ambient temperature 0 ... +50 °C

Material Polycarbonate

Display/control element

Detent positions per revolution

Handwheel 100
(mechanical detent mechanism)

Characteristic values according to EN ISO 13849-1 and EN IEC 62061

Emergency stop

B_{10D} 0.1 x 10⁶

Miscellaneous

Color

Housing Gray RAL 7040

The following applies to the approval according to UL Operation only with UL Class 2 power supply or equivalent measures

Downloads

All documentation for this material can be found on our website:

<https://www.euchner-usa.com/en-us/a/091638/?#downloads-tab>

Ordering data

Ordernumber	091638
Item designation	HBA-091638
Gross weight	1,423kg
Customs tariff number	85371098
ECLASS	27-33-02-02 Mobile Panel (HMI)

Accessories

Function expansion

23-pin short-circuit plug

083457

23POL/METALLAUSFUEHRUNG-083457

Extension cable 23-core, straight



091467

23POL/10M/METALLAUSFUEHRUNG

- ▶ Extension cable
- ▶ Flange plug connector with socket contacts, 23-pin
- ▶ Plug connector with male contacts, 23-pin
- ▶ Bayonet plug lock
- ▶ PUR cable
- ▶ Cable length 10 m, straight



091466

23POL/5M/METALLAUSFUEHRUNG-091466

- ▶ Extension cable
- ▶ Flange plug connector with socket contacts, 23-pin
- ▶ Plug connector with male contacts, 23-pin
- ▶ Bayonet plug lock
- ▶ PUR cable
- ▶ Cable length 5 m, straight

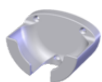
Female flange connector, 23-pin

074384

23POL/METALLAUSFUEHRUNG-074384

Mounting accessories

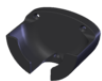
Holder for HBA



072828

HALTER HBA072828

- ▶ Plastic holder
- ▶ gray



100221

HALTER HBA-100221

- ▶ Plastic holder
- ▶ black



109979

HALTER HBA-109979

- ▶ Plastic holder
- ▶ black
- ▶ Handwheel can be operated in the holder



072935

HALTER HBA M

- ▶ Plastic holder
- ▶ gray
- ▶ Handwheel can be operated in the holder